



## Climb Every Mountain

The Messner Mountain Museum in Corones, Italy, was born of an extraordinary collaboration between mountaineer Reinhold Messner, mountain tourism experts Skirama Kronplatz and Zaha Hadid, star of contemporary architecture

+ **FOCUS: RESIDENTIAL**  
Completed and conceptual abodes in Hong Kong, Asia and beyond

HK\$48  
US\$18  
€15



9 771606 255002



# HEAVEN ON A HILLSIDE

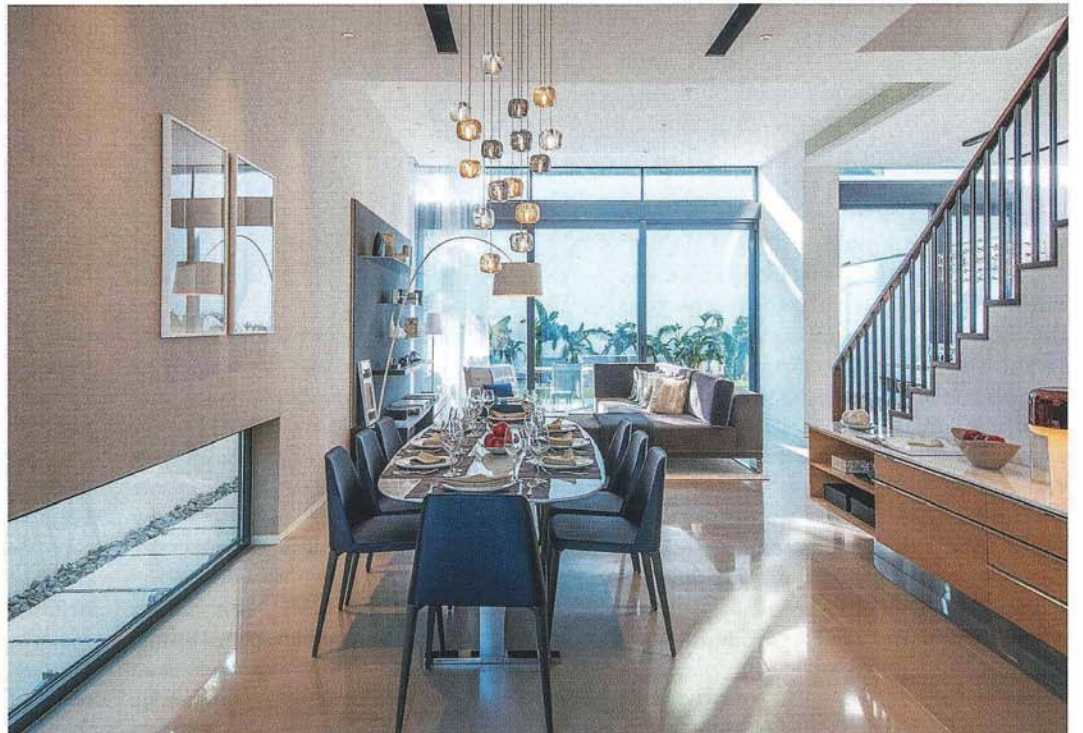
Text : Simon Yuen Photography: Courtesy of Swire Properties

*Whitesands combines the beauty and perfect setting of Hong Kong's south Lantau Island to create a tranquil, picturesque haven*

A densely populated city, Hong Kong accommodates more than seven million people in just 1,104 sq-km of space, a density far higher than many developed countries. For their part, Hong Kongers tend to prefer living in urban areas in order to enjoy convenience and easy access to various districts, at the expense of the size of their apartments — the latter is also affected by the soaring price of property in the territory, effectively making spacious apartments the privilege of only the very wealthy.

All that said, however, about 40 per cent of land in Hong Kong is set aside as country parks, resulting in about 70 per cent green coverage — and thereby offering great sea views and green surroundings for luxury houses in the more remote areas. Naturally, they come with the kind of price-tags you would expect of a luxury development of this kind. Recently unveiled by Swire Properties was its latest residential proposal, Whitesands, comprising 28 modern detached houses opposite Cheung Sha Beach on South Lantau, promising residents the best of both worlds.

Surrounded by lush greenery and a beautiful coastline capped off by Hong Kong's longest sandy beach, Cheung Sha Beach, Whitesands also boasts excellent connectivity to Hong Kong Island and Kowloon — and is about a 15-minute drive from Hong Kong International Airport and Tung Chung.

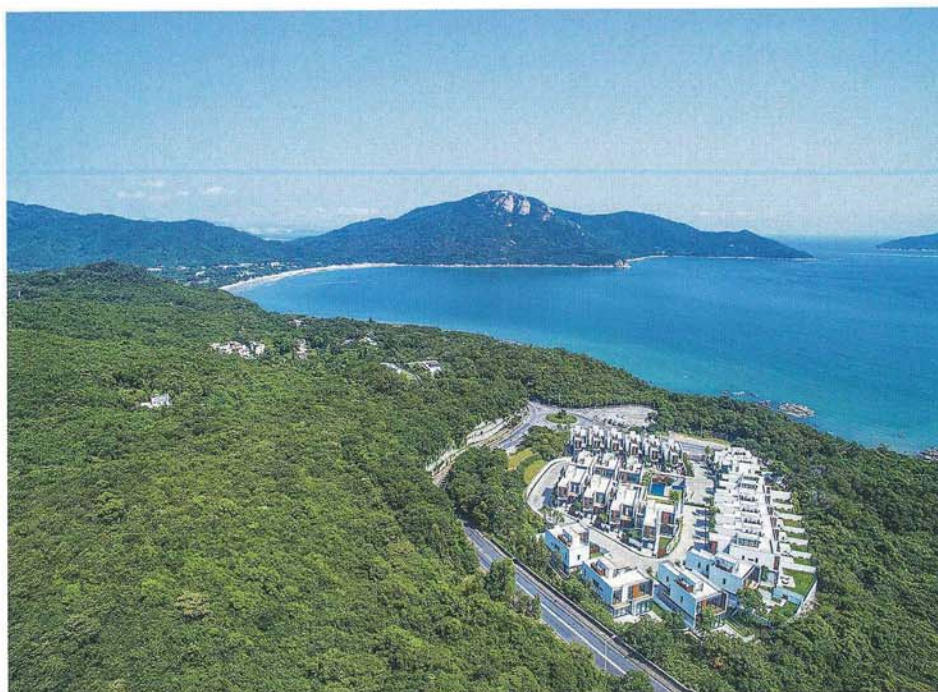


**Clockwise from facing page**  
Surrounded by mountains and greenery, a number of properties at Whitesands also boast their own private swimming pool • Enjoying South China Sea views and a private garden, House 27 was inspired by homes in France and the US in terms of its interior style • Designed as an 'urban house', the cool, neutral colours of House 15 bestow it with a sense of modernity and vibrancy

“As our first residential development on South Lantau, and in such a fantastic beachfront location, we engaged a top London architectural firm to produce something special, and we think we have done just that with Whitesands,”

*From top*

Located on South Lantau Island, Swire Properties' Whitesands developments offers 28 houses in four different sizes • With floor-to-ceiling windows and balconies, bedrooms are flooded with natural light during the day



“As our first residential development on South Lantau, and in such a fantastic beachfront location, we engaged a top London architectural firm to produce something special, and we think we have done just that with Whitesands,” said Adrian To, director, residential, at Swire Properties.

With architecture by PDP London, Whitesands also opened two show homes — Houses 15 and 27 — to the public, with interiors by international designer Heidar Sadeki. House 27, a two-storey house with rooftop and a 2,537 sq-ft garden facing the South China Sea and the garden, was conceived as an escape from the city, possibly even a second home: “I designed this house as a country home,” says Sadeki. “It has great sea views with a big garden, which are immediately relaxing... Residents can enjoy modern living in the countryside.”

The first floor, used as living room and dining room, feels incredibly spacious thanks to soaring ceilings of 4.1m in height. The brick-clad ceiling of the dining room is American in inspiration, while an expansive white dining table (seating up to eight) means large groups can enjoy meals with a view.

Upstairs, Sadeki has transformed the family room into a reading corner, which has — as do the three bedrooms — a floor-to-ceiling window, offering access to a balcony. In the airy master bedroom, the designer removed the wall of the walk-in closet to create more openness. The resort theme filters through into every detail of the room,



with timber cladding on part of the wall, linen wallpaper, pale wood flooring and a wooden bedframe adding both warmth and a luxe touch.

The other two bedrooms are in line with the theme with floor-to-ceiling windows allowing sunlight to come in. These rooms are decorated in a minimalistic way to create more space.

Offering a contrast in style, House 15 was conceived as a completely urban home, according to Sadeki. “I classify myself as an urbanite, so I like this house more,” he confides. “You can host business meetings

here, and it is envisioned as being the residents' sole home. Plus, being near the airport makes it convenient and quick for its residents to get anywhere.”

As with House 27, the designer has put his personal touch on the layout in certain areas — upstairs, for example, the family room has been converted into a study. Up on the roof, parties and gatherings can also be held as it is now an additional entertaining space... But Sadeki has a word of advice for Hong Kongers on how to cope with the territory's warm humid climate: “Always turn the air-conditioners on!” ●