

Wallpaper*

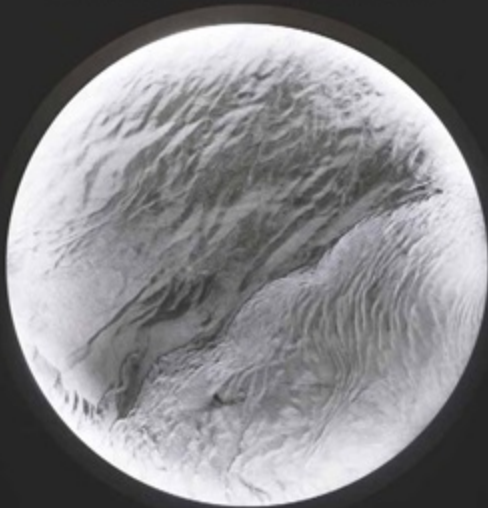
AUGUST 2018

*THE STUFF THAT REFINES YOU



The Handmade Issue

A whole new world of wellness and wonder



COSMIC CALM AND CELESTIAL FLIGHTS

Putting a rocket under your inner glow

Maarten Baas' naughty playground Space Copenhagen's back-bending ball
Xavier Lust's helpfully hairy chair Federica Biasi's Indo-Roman dispensary
Paco Rabanne's curtain of calm Mae Engelgeer's cuddly column
David Thulstrup's baffling room divider Edmund Zhang's squeezable lamp

Wallpaper

New York-based Richardson Sadeki designs a neutral interior for a duplex apartment in Hong Kong

ARCHITECTURE / 6 AUG 2018 / BY HARRIET THORPE

Located in the Upper Mid-Levels on Conduit Road, The Morgan's only duplex with a terrace has views over Victoria Peak and the Hong Kong skyline. *Photography: Lit Ma / Common Studio Limited*

INFORMATION

For more information, visit the Richardson Sadeki website

The Sky Duplex at The Morgan in Hong Kong has received a new interior design by Heidar Sadeki of New York-based Richardson Sadeki. Sadeki designed a new collection of furniture and a neutral palette of natural materials to reflect the apartment's unique views of Victoria Peak and the contemporary grandeur of the building's architecture.

Located in the Upper Mid-Levels on Conduit Road, The Morgan was designed by New York-based Robert A. M. Stern Architects. The classical, yet contemporary design reflects a pared-back grandeur, also seen at one of New York's most-coveted residential addresses 15 Central Park West, also designed by Stern's practice.

The panoramic apartment, the last remaining duplex in the building, spans 218 sq m across floors 28 and 29. The only duplex in the building with a private terrace, it has ceiling heights reaching 3.5m and is filled with light from floor-to-ceiling windows overlooking Victoria Peak.



Interior details of the master suite at the Sky Duplex. Photography: Lit Ma / Common Studio Limited

‘In designing The Morgan Sky Duplex, I was inspired by the lush green expanse of Victoria Peak on one side and the Hong Kong

skyline on the other side, so I created a dialogue between the serenity of the natural environment and the complexity of the city's urban fabric,' says Sadeki, co-founder and creative director of Richardson Sadeki.

'The interior design takes on a cinematic narrative where spaces imitate and examine this duality, evoking different emotions and creating contrasts and harmonies as one moves through the residence,' says Sadeki.

A new collection of furniture including sofa, lounge chairs and coffee table was designed specifically for The Morgan Sky Duplex to reflect the lightness of the space and unique natural qualities of the views. Interior stone surfaces meet the robustness of the architectural design. A bespoke Turkish ivory travertine wall was installed in the living area, while the spa in the master suite is fitted with Greek Ariston white marble.



The master bathroom with views over Victoria Peak. Photography: Lit Ma / Common Studio Limited

The neutral palette magnifies the intensity of the light – the space features white Poggenpohl cabinets in the kitchen and a light marble ten-seater table in the dining room lit by Lasvit's Pendant Clover lights. An atomising glass wall separates the dining room and kitchen helping light to flow through whilst dividing the space.

Sadeki's own photographs of works by American sculptor Richard Serra are displayed along the timber panelled hallway on the second floor. The design selected further works by Hong Kong-based artist Sim Chan and New York-based artist Alex Amini. §